

# SafeStand® Access Systems

Product catalogue



# Notes



# Contents

Introduction to the Safestand® Access Systems	4
System Description	5
Typical Uses	6
System Benefits	8
Summary	9
Patent Protection	10
Technical Specification	11
Product Catalogue	12
- SafeStand® 500	12
- SafeStand® 800	13
- SafeStand® 1200	14
- SureStand® 800	15
- SafeStand® Extension (Ext.) Stand	16
- SafeStand® Decking	17
Specification Schedule	18
Applications	20
Safestand® Features	22
Awards	26
Delivery	27
Product Awareness	28
Our Satisfied Customers	30
Checklist	31





# Introduction to the **SafeStand® Access Systems**

---

**Work at height has always been hazardous and in spite of everything that has been implemented over recent decades to improve this record, it is still a major cause of death and serious injury in the workplace.**

With the introduction of the new Work at Height Regulations in 2005, the definition of the term "Work at height" was changed to mean any place from which a worker could injure themselves from falling - regardless of whether it is above, at or below ground level. The reason for the change is that, as statistics show, there have been more injuries resulting from low-level falls (i.e. less than 2 metres) than from high-level falls.

Traditionally, "trestles" or "bandstands" as they are sometimes called have been used extensively in the construction industry in lieu of scaffolding for low level access/working platforms. Increasingly, more and more contractors are banning this form of access from the workplace and are insisting that guardrails are required to all working platforms no matter what the height. SafeStand® Access Systems comply with

this criteria and are quite often specified by contractors.

The SafeStand® Access System is designed for use by skilled or semi-skilled operatives. By using the SafeStand® system, an access platform of any length may be constructed by adding units until the required length is reached. For convenience, units are designed to suit standard scaffold board lengths (i.e. 3.9m, 3.0m, 2.4m & 1.8m.) It is extremely versatile and adapts to suit almost all site situations.

SafeStand® have demonstrated an understanding and responsiveness to onsite safety requirements and the continual development and enhancements of its systems proves that SafeStand® are the industry leaders in terms of the provision of low-level access systems.



Trestle/bandstand platform



SafeStand® Access System

# System Description



Shown are SafeStand® 500, 1200 and 800/5 (left to right)

The system uses treated, robust steel box sections with a durable powder-coated finish that enhances longevity and prolongs service life. It is also designed to work with standard scaffold boards.

Designed to streamline erection, each component is colour coded to ensure a clear and straightforward assembly process on-site. This not only simplifies workflows but also enhances ease of inspection throughout use.

The platform height is set using bearing pins. Anti-flip brackets are always placed over the end most stands to remove traps and trip hazards from the platform.

It is then boarded out followed by toe-boards, using the integral securing brackets located on the fixed posts. As required, end toe-boards are fitted using the return toe-board brackets. Guardrails are installed from ground level or when not in reach can be safely installed at height using the advanced guardrail technique. Finally, the selected access option, staircase or ladder, is securely attached.

Due to the exceptional load-bearing capacity of each stand, of up to 1000kg SWL, the system is perfectly suited to form loading bays, accommodating use of forklifts or over-head cranes with ease.

## Key features of SafeStand®

- Robust, counter-balanced base frame – Provides a stable foundation for the system.
- No screws, clips, nuts, or bolts – No small parts to lose or damage. Plus, no tools needed!
- Telescopic guardrails – Allows flexibility in erection and adjustment.
- Locking pin – Prevents the guardrail from being overextended, ensuring safety.
- Return toe-board brackets - Secures the platform ends.
- Short handrail – Seamlessly links adjacent boarded bays together.
- Anti-flip brackets – Prevent boards from overturning or creating hazardous “traps”.
- Staircase/ladder gate brackets – Provide safe and secure access to the system (side and end access available by staircase).
- Diagonal brace – Enhances stability when used on platform heights of 1800mm and above.
- Supports the use of a Hoddi/Bumpa Hoist – Facilitates efficient material handling.



# Typical Uses



**SafeStand® 1200's on a curve**  
Laing O'Rourke at Pembury Hospital



**Steel fixing**  
Daninger Construction Ltd



**Balcony soffit cladding**  
John Fleming Construction, Dublin



**Blocklaying**  
BAM Construction Ltd



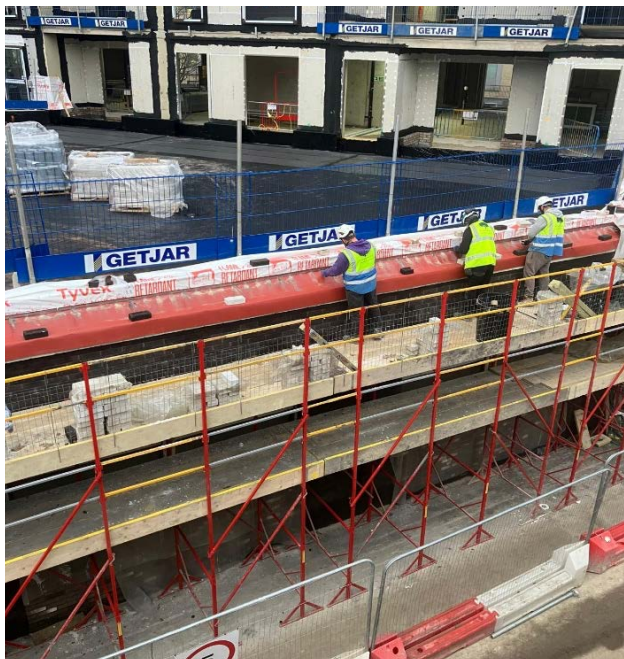
**Installation of gabion walls**  
C.A Blackwell - Balfour Beatty – London



**Blockwork**  
C&I Smith - Wates – Wakefield

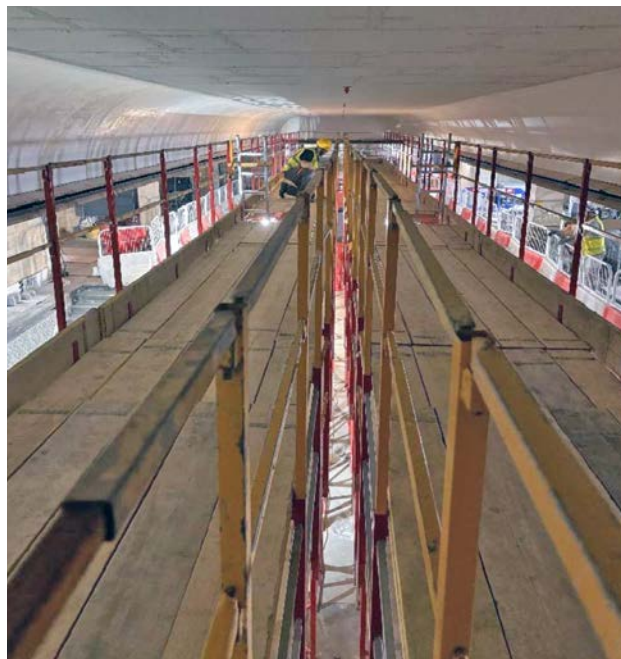


# Typical Uses



**Bricklaying (Ext.Stand at platform height 3.2m)**

Grangewood Brickwork Contractors Ltd – Bowmer & Kirkland  
- White City



**Finishes (Ext.Stand at platform height 3.2m)**

Ateliers de France (ADF) – Multiplex - Grosvenor Square



**Roof Trusses (Decking at platform height 1.8m)**

Cranbrook – Private Residential Build



**Sub-Station (Decking at platform height 1.7m)**

Hill Group – Custom House, East London

# System Benefits

---

## **Simple design**

Universal components.

## **Rugged components**

Built to last.

## **Excellent safety features**

Ensuring safe and correct use in operation.

## **Speed of erection**

Build 12 metres in less than 15 minutes.

## **Safe during build and use**

Minimal requirement for supervision during erection and use.

## **Relatively lightweight**

Facilitating ease of repositioning.

## **Cost effective**

Minimal labour requirement.

## **Adaptable**

Can be built in a shallow curve, turns 90° and integral loading bays can be included.

## **Ultimate flexibility**

Any length platform can be created.

## **Range of heights**

Various platform heights ranging from 500mm to 3210mm.

## **Improves workflow efficiency**

Uninterrupted, more cost-effective production, without having to wait for other trades.



SafeStand® 1200 System being used by Lesterose Builders Ltd on a LendLease site at Maddox St, London



By utilising short and mini guardrails the system can be erected at 90° whilst still maintaining the boarded platform at a level ensuring that there are no trip hazards



# Summary

---

**SafeStand® systems provide secure and reliable access for working at height. Tested to BS1139: Part 4, each individual SafeStand® unit has a Safe Working Load (SWL) of 1000kg (1 tonne). The SureStand® has a SWL of 800kg, while the Ext. Stand supports a SWL of 500kg, ensuring strength, stability, and dependable performance across various applications.**

The systems are simple to erect enabling the works to proceed without delay. Patented interlocking units ensure ease of assembly.

Initially designed for brick and blockwork construction, SafeStand® has proven versatile and strong enough for a wide range of construction activities, including demolition, concrete reinforcing, M&E, window installation, and decoration. Units combine to create platforms of any length, tailored to the task. The system's adaptability also suits non-construction uses such as elevated access, viewing platforms, and more.

The unique design of the SafeStand® systems will assist best productivity and highest safety standards.



Pacebrow Brickwork Ltd – BAM – West London



HS2 - Old Oak Common

# Patent Protection

SafeStand® Ltd have rigorously ensured that all elements of their unique access systems are protected by UK, Ireland, European and International patents. The uniqueness of this system has been recognised by a grant of patents in accordance with the Patents Act 1977 with further patents pending.

## Patents

### UK

Granted	GB2539663 GB2605607
Applications	GB2313034.7 GB2314273.0 GB2405283.9 GB2406498.2

### Ireland

Applications	IE2024/0483 IE2024/0575 IE2024/0690
--------------	---

### USA

	8794381
--	---------

### PCT patent application

	PCT/EP2024/082664
--	-------------------

### Registered Designs

GB-9000229349-0001
GB-9000312145-0003/4/5
GB-6128826
GB-6384194-6384203
EU-000229349-0001
EU-000312145-0003/4/5

### Registered Trademarks

GB-00903872611 (SafeStand)
GB-2352394 (SafeStand - Series of 3)
EU-003872611 (SafeStand)
GB-00905128871 (SureStand)
EU-005128871 (SureStand)

Patent and RRDs valid at the time of printing.



# Technical Specification

All load testing to the relevant British Standards is independently carried out by Lloyds British and Plant & Safety.

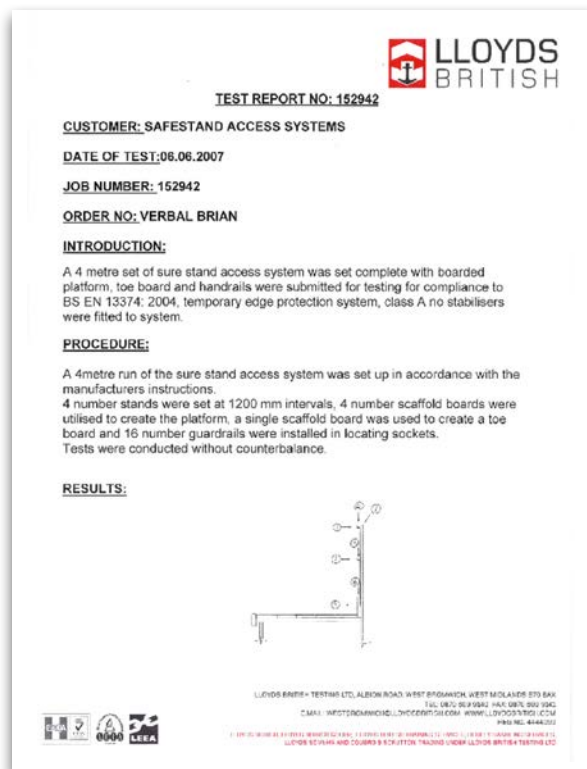
## Load testing SafeStand® Access Systems

SafeStand® systems were tested by Lloyds British to BS 1139 Part 4 1982; they were subsequently found to have exceeded this requirement.

In all a load of 5000kg (5 tonne) was applied to both the 1200 system (utilising the diagonal brace) and the 800 system at maximum extensions. This resulted in a load on each stand of 2500kg (2.5 tonne) which when factored by a safety factor of 2.5, as required by BS 1139, each stand has been given a SWL (safe working load) of 1000kg (1 tonne) and have been issued with a Lloyds British stamp of approval.

## Handrail testing SafeStand® Systems

In addition the SafeStand® Systems were tested for compliance to BS EN 13374: 2004, Temporary Edge Protection Systems, class A. Again this testing was independently carried out by Lloyds British. The testing produced results that demonstrated that the SafeStand® handrails could take loads of more than three times the requirement of the above British Standard. Lloyds British stated that the SafeStand® system surpasses all current requirements and, subject to specification conformity, the system was issued with a Lloyds British stamp of approval.



## SureStand® Access Systems

Just like the SafeStand® Systems, SureStand® underwent rigorous independent testing by Lloyds British and exceeded all current British Standards, demonstrating its superior safety and reliability.

## SafeStand® Ext.Stand and Decking Systems

Independently assessed by Plant & Safety Ltd, the SafeStand® Ext.Stand and Decking Systems not only met but surpassed the requirements of BS1139: Part 4, reinforcing its exceptional performance and compliance.

For test certificates or specification details, please contact our office.

# Product Catalogue

## SafeStand® 500



### SafeStand® 500 System

#### Typically, each 4m (13') run would include:

- 4 x SafeStands®
- 4 x Front Posts
- 16 x Horizontal Guardrail
- 2 x Anti-Flip Brackets
- 2 x Return Toeboard Brackets
- 1 x Ladder/Staircase Gate Bracket
- 1 x Self-closing Gate

#### And will also require:

- 5 x 13' Scaffold Boards
- 4 x Toeboards
- 1 x Staircase or 1 x 2m Ladder
- 1 x Ladder Lashing (to secure ladder)

#### Do you require Brickguards?

#### Erected platform heights

540mm, 640mm and 840mm

#### Note

Any length of platform can be created using varying lengths of scaffold boards.



# Product Catalogue

## SafeStand® 800



### SafeStand® 800 System

#### Typically, each 4m (13') run would include:

- 4 x SafeStands®
- 4 x Front Posts
- 16 x Horizontal Guardrail
- 2 x Anti-Flip Brackets
- 2 x Return Toeboard Brackets
- 1 x Ladder/Staircase Gate Bracket
- 1 x Self-closing Gate

#### And will also require:

- 6 x 13' Scaffold Boards
- 4 x Toeboards
- 1 x Staircase or 1 x 3m Ladder
- 1 x Ladder Lashing (to secure ladder)

#### Do you require Brickguards?

#### Erected platform heights

840mm, 980mm, 1150mm and 1340mm

#### Note

Any length of platform can be created using varying lengths of scaffold boards.

# Product Catalogue

## SafeStand® 1200



SafeStand® 1200 System raised to full extension (2210mm platform)

### Typically, each 4m (13') run would include:

- 4 x SafeStands®
- 4 x Front Posts
- 16 x Horizontal Guardrail
- 2 x Anti-Flip Brackets
- 2 x Return Toeboard Brackets
- 1 x Ladder/Staircase Gate Bracket
- Bracket

### And will also require:

- 6 x 13' Scaffold Boards
- 4 x Toeboards
- 1 x Staircase or 1 x 3m/3.5m Ladder
- 1 x Ladder Lashing (to secure ladder)
- 4 x Diagonal Braces (platform heights above 1.8m)

### Erected platform heights

1320mm, 1360mm, 1530mm, 1700mm, 1870mm, 2040mm and 2210mm

### Note

Any length of platform can be created using varying lengths of scaffold boards.  
See page 16 for the Ext. Stand platform heights.



# Product Catalogue

## SureStand® 800



**SureStand® 800 System**

**Typically, each 4m (13') run would include:**

- 4 x SureStands®
- 4 x Front Posts
- 16 x Horizontal Guardrail
- 2 x Anti-Flip Brackets
- 2 x Return Toeboard Brackets
- 1 x Ladder/Staircase Gate Bracket

**And will also require:**

- 5 x 13' Scaffold Boards
- 4 x Toeboards
- 1 x Staircase or 1 x 3m Ladder
- 1 x Ladder Lashing (to secure ladder)

**Erected platform heights**

840mm, 890mm, 1040mm, 1190mm and 1340mm

**Note**

SureStand® has been specifically designed as a lightweight alternative to SafeStand®. The Safe Working Load (SWL) of each SureStand® is 800kg. Any length of platform can be created using varying lengths of scaffold boards.

# Product Catalogue

## SafeStand® Extension (Ext.) Stand



SafeStand® 1200 System with the addition of the SafeStand® Ext. Stand

### Typically, each 4m (13') run would include:

- 4 x SafeStand 1200®
- 4 x Diagonal Braces (platform heights above 1.8m)
- 4 x Ext. Stand
- 4 x Front Posts
- 20 x Horizontal Guardrail
- 8 x Fixed (Silver) Horizontal Guardrails
- 8 x Anti-Flip Brackets
- 4 x Return Toeboard Brackets
- 1 x Gate Bracket

### And will also require:

- 10 x 13' Scaffold Boards
- 8 x 1.5m Scaffold Boards
- 4 x Toeboards
- 1 x 5m Extendable Ladder
- 1 x Ladder Lashing
- 10 x Brickguards
- 1 x Scaffold Trap Gate
- 2 x T Braces

### Erected platform heights

2870mm, 3040mm and 3210mm

### Note

The Safe Working Load (SWL) of each Ext.Stand® is 500kg for walls up to 5m.  
Any length of platform can be created using varying lengths of scaffold boards.  
The minimum platform length is 13' (4.0m).



# Product Catalogue

## SafeStand® Decking



SafeStand® Decking System shown with sliding stands with a braced height of 2200mm

**As shown, 16m<sup>2</sup> or 13'x13', the platform would include::**

12 x SafeStand® Decking  
18 x Front Posts  
34 x Horizontal Guardrails  
12 x Anti-Flip Brackets  
1 x Gate Bracket

**And will also require:**

10 x 13' Scaffold Boards  
10 x 5' scaffold boards  
1 x 3m/3.5m Ladder/Staircase  
1 x Ladder Lashing

**Erected platform heights**

1320mm, 1360mm, 1530mm, 1700mm, 1870mm, 2040mm and 2210mm

**Note**

SafeStand® Decking, a 100% free-standing platform, has been specifically designed for the residential market as alternative to platform decking. 3rd Party tested to BS1139 : Part 4, therefore not dependent on adjacent structures, the Safe Working Load (SWL) of each Decking Stand and Bridging Bar is 1000kg.

Any square area of platform can be created using varying lengths of scaffold boards, incl with the use of the new Telescopic Scaffold Board.

# Specification Schedule

SafeStand® component weights and platform heights

Description	SafeStand® 500 System (4 board)	SafeStand® 800 System (5 board)	SafeStand® 1200 System (5 board)	SureStand® 800 System (4 board)	Ext Stand® System	SafeStand® Decking System
Safe Working Load	1000 kg	1000 kg	1000 kg	800 kg	500 kg	1000 kg
Platform Heights	540 mm	840 mm	1320 mm	840mm	2870 mm* (BRACED)	1320 mm
	640 mm	980mm	1360 mm	890 mm	3040 mm* (BRACED)	1360 mm
	840 mm	1150 mm	1530 mm	1040 mm	3210 mm* (BRACED)	1530 mm
		1340 mm	1700 mm	1190 mm		1700 mm
			1870 mm (BRACED)	1340 mm		1870 mm (BRACED)
			2040 mm (BRACED)			2040 mm (BRACED)
			2210 mm (BRACED)			2210 mm (BRACED)
Component Weights						
SafeStand® Upper	7.8 kg	9.8 kg	11.3 kg	6.2 kg	10.4 kg	8.4 kg
SafeStand® Lower	10.2 kg	12.1 kg	15.1 kg	7.9 kg		14.4 kg
Removable Front Post	1.7 kg	1.7 kg	1.7 kg	1.7 kg	1.7 kg	
4 Board Anti-Flip Bracket	4.0 kg			4.0 kg		
5 Board Anti-Flip Bracket		4.9 kg	4.9 kg		4.9 kg	4.9 kg
Guardrail	2.1 kg	2.1 kg	2.1 kg	2.1 kg	2.1 kg	2.1 kg
Ladder Gate Bracket	3.0 kg	3.0 kg	3.0 kg	2.0 kg	3.0 kg	3.0 kg
Short Guardrail	1.0 kg	1.0 kg	1.0 kg	1.0 kg	1.0 kg	1.0 kg
Toeboard Return Bracket	1.2 kg	1.2 kg	1.2 kg	1.2 kg	1.2 kg	1.2 kg
Diagonal Brace			3.0 kg		3.0 kg	3.0 kg
Other					Fixed G/Rail 1.2 kg	Bridging Bar 4kg
						Telescopic Scaffold Board** 16kg.

\*Diagonal Brace - Used only with SafeStand® 1200 platform heights from 1870mm

\*\*Telescopic scaffold board - Compatible with all SafeStand Access Systems

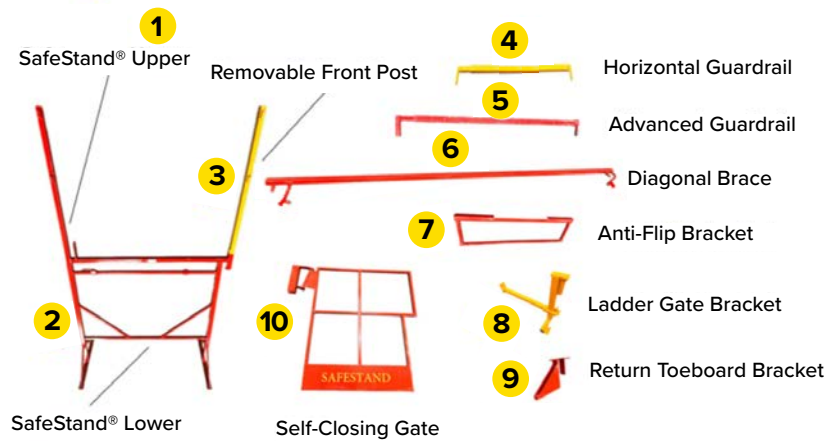


# Specification Schedule

SafeStand® components

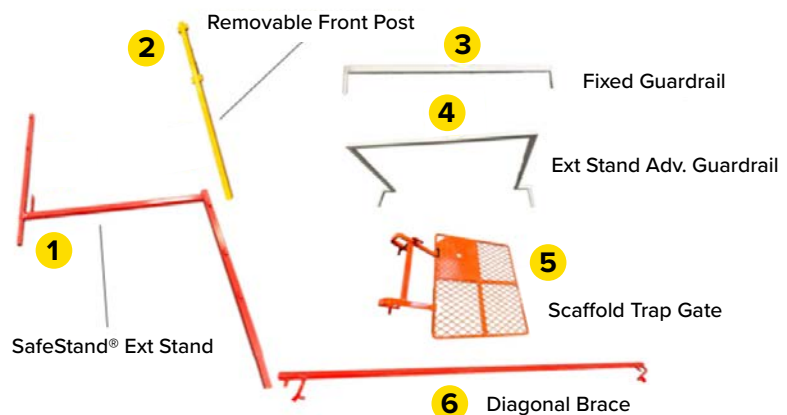
## SafeStand® consists of 10 standard components:

1. SafeStand® Upper
2. SafeStand® Lower
3. Removable Front Post
4. Horizontal Guardrail
5. Advanced Guardrail
6. Diagonal Brace (for platform heights 1800mm and above)
7. Anti-Flip Bracket
8. Ladder Gate Bracket
9. Return Toeboard Bracket
10. Self-Closing Gate



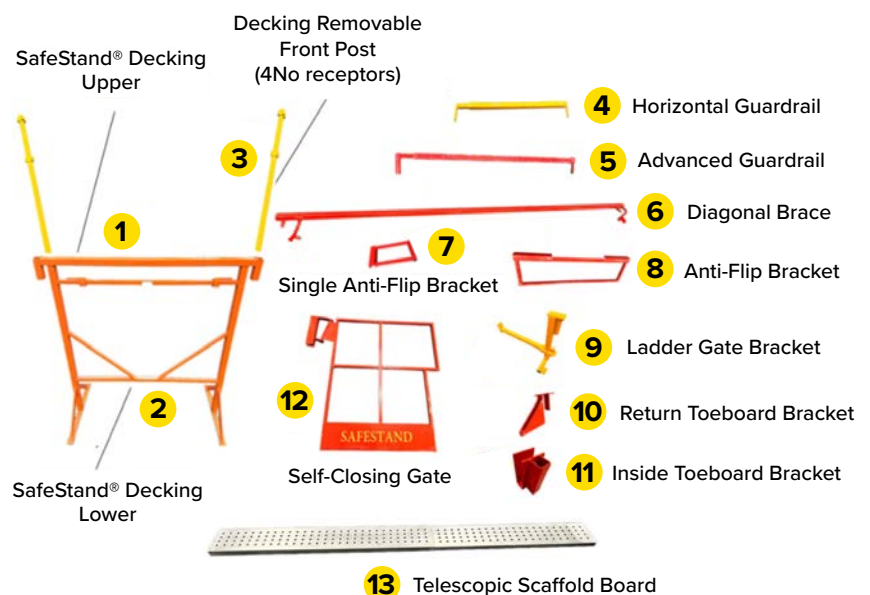
## SafeStand® Extension Stand components

1. SafeStand® Extension (Ext.) Stand
2. Removable Front Post
3. Fixed (Silver) Guardrail
4. Ext. Stand Adv. Guardrail
5. Scaffold Trap Gate
6. Diagonal Brace (for platform heights 1800mm and above)



## SafeStand® Decking components

1. SafeStand® Decking Upper
2. SafeStand® Decking Lower
3. Removable Front Post
4. Horizontal Guardrail
5. Advanced Guardrail
6. Diagonal Brace (for platform heights 1800mm and above)
7. Single Anti-Flip Bracket
8. Anti-Flip Bracket
9. Ladder Gate Bracket
10. Return Toe Board Bracket
11. Inside Toe Board Bracket
12. Self-Closing Gate
13. Telescopic Scaffold Board\* (compatible with all SafeStand® Access Systems)



# Applications

Loading bays



Loading out  
by forklift



Loading out  
by hand



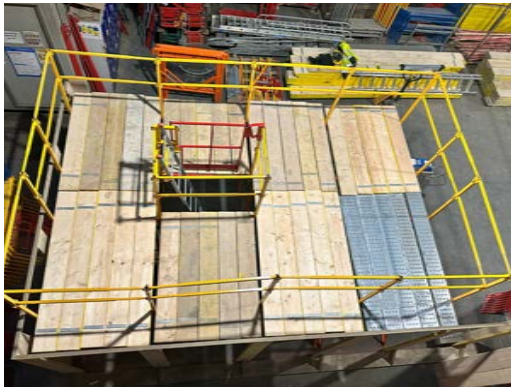
Loading out  
by Hoddi/  
Bumpa Hoist



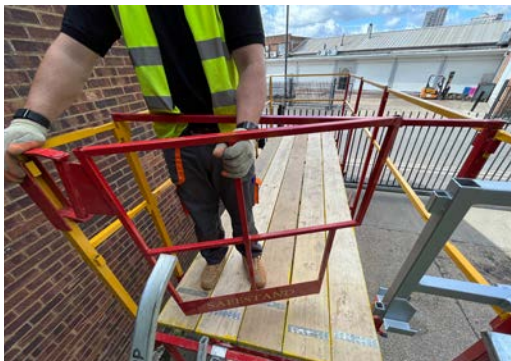


# Applications

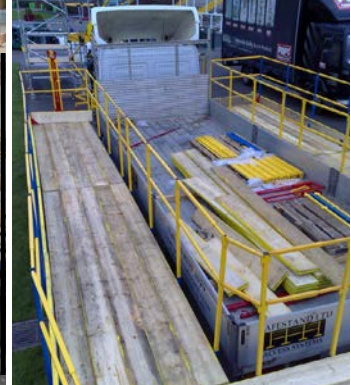
**Decking  
(birdcage  
access)  
(telescopic  
scaffold boards  
available)**



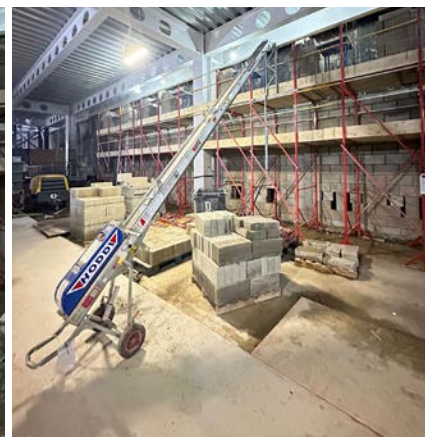
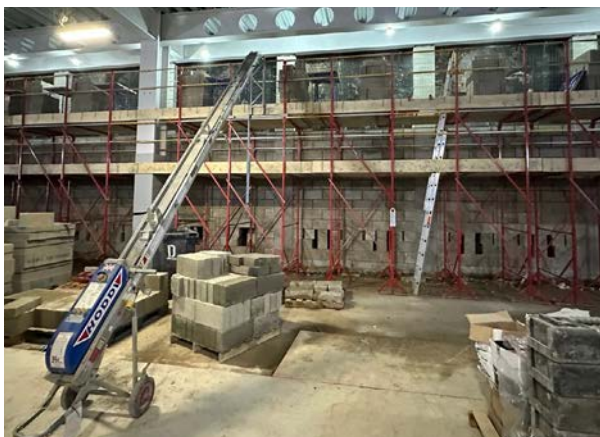
**End access**



**Vehicle edge  
protection**



**Build walls  
up to 5m with  
mechanical  
means of  
loading out**





# SafeStand® Features

## Diagonal Brace

The diagonal brace is a key feature of the SafeStand® Access Systems, designed exclusively for use with the SafeStand® 1200 and the Decking system. It enhances platform stability when working at heights ranging from 1800mm to 2210mm. Important Note: The diagonal brace is only required for platform heights of 1800mm and above.

The diagonal brace is only required when the system is used with platform heights of 1870mm, 2040mm & 2210mm; 4 diagonal braces are supplied with every 4m SafeStand® Set at no additional cost to the customer; when required for these heights.



## Advanced Guardrail

The SafeStand® Advanced Guardrail, a variation of the standard guardrail, serves exclusively as leading edge protection. It allows safe installation of main guardrails when platform height prevents access from the current level. The installation sequence appears in both our Training Video and Training Guide. This guardrail comes in a different colour than the standard version and features a design that prevents use as a standard guardrail.



## Guardrail Retaining Pin

For added safety, all SafeStand® telescopic guardrails are equipped with spring pins at two key locations. The first pin is conveniently set at 1200mm, ensuring the maximum allowable spacing between stands, while the second pin prevents over-extension, stopping the guardrail from extending beyond its safe limit and maintaining its structural integrity.

# SafeStand® Features

---

## Ladder Access Bracket

The Ladder Access Bracket allows safe and easy access to the SafeStand® system. Using a wire lashing to tie both stiles of the ladder to the Ladder Access Bracket, it then becomes an integral part of the SafeStand® system. The general method of opening/closing off the access way is by unhooking one end of each of the guardrails at the entry point and opening/closing them by rotating them about the hooked end.



## Anti-Flip Bracket

This bracket was designed specifically to overcome the inherent danger of “traps” (unsupported ends of scaffold boards) that are encountered when utilising traditional bandstands or trestles.

It has been designed with simplicity in mind; it connects to the horizontal transom of the SafeStand®, and provides support to the overhang of the scaffold board where boards butt up to each other.

The bracket also enables erection of a level working platform at corners, eliminating the need for lapping boards and removing the trip hazard typically associated with traditional bandstands or trestles





# SafeStand® Features

## Access Gate

SafeStand® has developed a self-closing, gravity-hinged gate designed for seamless integration with all SafeStand® Access Systems. The gate features a gravity swing hinge, ensuring it automatically returns to the closed position for enhanced safety. Its design guarantees a fail-safe closure, preventing accidental openings and maintaining a secure work environment.

The gate and latch mechanism are engineered to prevent the gate from opening outward from the work platform, even when not latched. This added security reduces the risk of unintended access while ensuring compliance with safety standards. Following SafeStand®'s tool-free installation principles, the gate is quick and easy to install, requiring minimal effort for setup and removal.



## SafeStand® Staircase

SafeStand® has developed a staircase system designed for use with a Staircase Gate Bracket, making it fully compatible with all SafeStand® systems. This innovative staircase features a fold-flat design with detachable handrails, allowing for easy transportation and storage. It can be used with platforms at heights ranging from 500mm to 2210mm.

Engineered with the same principles as all SafeStand® equipment, the staircase requires no tools for assembly or dismantling, ensuring quick and efficient installation. Designed for a two-person setup, it folds flat when not in use, making it easy to move around the site. The removable handrails also fold flat for convenient storage. The staircase support bracket securely slots over a rest bar, which is inserted between two stands at the access point, providing a stable and secure connection. The SafeStand® Staircase is available in four sizes: 3, 5, 6, and 9 Tread. Each tread has a Safe Working Load (SWL) of 1.5kN per step (150kg), ensuring durability and safety for various site requirements.



# SafeStand® Features

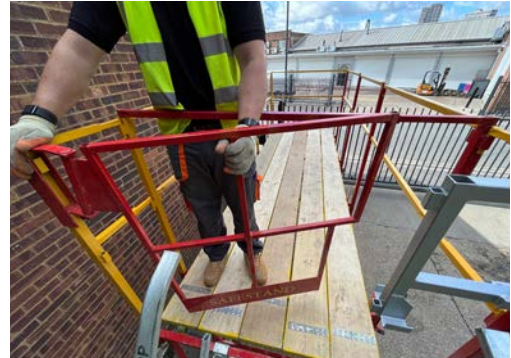
---

## End Access Bracket

SafeStand® introduces the End Staircase Gate Bracket, a simple yet effective solution for safe end access to boarded platforms. This innovative bracket provides an alternative means of access while maintaining the core principles of efficiency, ease of use, and worker safety. Designed for quick, tool-free installation, it effortlessly slots into place, ensuring seamless integration with all SafeStand® Access Systems.

This bracket enhances site safety by maintaining fire and emergency routes in narrow areas while reducing manual handling risks associated with ladders. By streamlining access, it also boosts productivity, allowing workers to move efficiently and complete tasks faster.

With its ease of use and improved safety, the SafeStand® End Staircase Gate Bracket fosters a safer, more productive work environment while minimising risks and ensuring compliance with site regulations.



## Hoddi Hoist Bracket

SafeStand® introduces the Hoddi Hoist Bracket, an innovative solution designed to improve material handling efficiency on site. This patented bracket securely affixes a Hoddi Hoist or material conveyor belt to SafeStand® working platforms, enabling faster, safer, and more streamlined loading from ground level.

By reducing manual handling activities, the Hoddi Hoist Bracket helps to minimise physical and repetitive strain on workers while cutting down labour requirements. This contributes to a smarter, safer working environment and enhances overall productivity by optimising material transport. The bracket has been rigorously tested to ensure durability and seamless integration with all SafeStand® Access Systems.

Its intuitive design means that no specialist tools are required for installation, allowing for quick deployment on site. By enhancing operational efficiency, the Hoddi Hoist Bracket supports projects in meeting deadlines while maintaining the highest safety standards. This addition reinforces SafeStand®'s commitment to delivering practical, high-performance solutions for the construction industry.





# SafeStand® Features

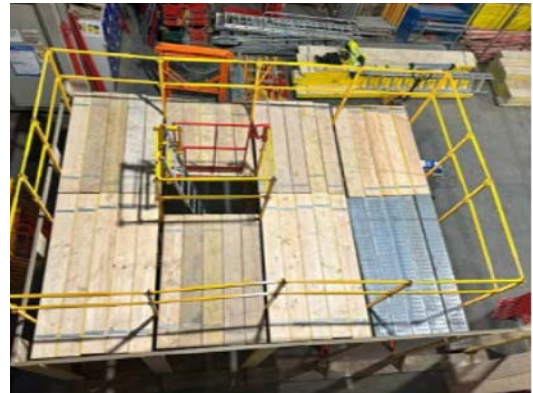
## SafeStand® Telescopic Scaffold Board

The SafeStand® Telescopic Scaffold Board has been developed to eliminate the need for cut scaffold boards, offering a practical and efficient solution to awkward or varying span lengths.

Available in 1.5m and extendable to 2.6m, this robust steel platform adjusts seamlessly to suit 4 or 5 board configurations when supported at 1.2m centres. Independently tested in accordance with BS EN 12811-1:2003 (Load Class 6), as well as LOLER and PUWER, the SafeStand® Telescopic Scaffold Board exceeds the necessary criteria for strength, stability, and safety. All test results confirmed minimal deflection and zero permanent deformation under full loading conditions.

This board is fully compatible with the SafeStand® Access Systems and enables users to adapt platform dimensions quickly on site—reducing downtime, waste, and the need for multiple board lengths. It is particularly suited for use in areas where fixed board sizes are impractical or where layout changes frequently occur.

Like all SafeStand® equipment, the SafeStand® Telescopic Scaffold Board has been “designed by builders for builders,” ensuring a practical, site-ready product that improves workflow and enhances safety.



## Awards



Belfast, 2006



# Delivery

At SafeStand®, we utilise our own fleet of HGV vehicles to distribute SafeStand® Access Systems throughout the UK.

We can guarantee a 72 hour delivery service throughout the UK, but generally, if required, we can provide a next day service.



# Product Awareness

SafeStand Ltd regularly works with training colleges throughout the UK, demonstrating the benefits of SafeStand® Access Systems to the students and increasing their awareness of the various products available to them in their future careers on construction sites.



Demonstrating at HSE organised Safety, Health & Awareness Day (SHAD)



Bricklaying apprentices at Milton Keynes College



Apprentice Bricklaying Competition



# Product Awareness

SafeStand® Access Systems have assisted various bodies in the preparation and production of Health & Safety publications with particular reference to Working at Height and referenced in the CITB – Construction Skills GE706 Site Safety Simplified publication.





# Our Satisfied Customers

With over 2,500 customers and involvement in both developer and main contractor projects, SafeStand® proves safe, simple to erect, and cost-effective.



# Checklist

## SafeStand®/SureStand® Erection & Inspection Checksheet

Location Of Access System:		
TO BE COMPLETED BY A SUITABLY TRAINED PERSON BEFORE BEING TAKEN INTO USE AND PRIOR TO EACH USE		
CHECKLIST		
SafeStand® (1000 Kg/Stand)	No damage to boards	
SureStand® (800 Kg/Stand)	Platform level	
Ext.Stand® (500 Kg/Stand)	No gaps in boards	
Solid, firm & level base.	Anti-flip Brackets @ Board Ends	
Stands max. 1.2m centres	Toe boards secured in place.	
No damage to equipment	Ladder/Staircase secured in place	
Bearing pins engaged	Ladder/Staircase set near mid span	
Front posts secure	Ladder set at 75° on bracket	
Double guardrail in place	Ext. Stand fixed guardrail	
HB Braces (1.8m and above)		
DATE	TIME	
INSPECTED BY (PRINT NAME)		
SIGNED		
REGULAR INSPECTIONS (BEFORE USE)		
DATE	TIME	INITIAL

SafeStand Ltd  
0208 795 3579

## SafeStand®/SureStand® Erection & Inspection Checksheet

Location Of Access System:		
TO BE COMPLETED BY A SUITABLY TRAINED PERSON BEFORE BEING TAKEN INTO USE AND PRIOR TO EACH USE		
CHECKLIST		
SafeStand® (1000 Kg/Stand)	No damage to boards	
SureStand® (800 Kg/Stand)	Platform level	
Ext.Stand® (500 Kg/Stand)	No gaps in boards	
Solid, firm & level base.	Anti-flip Brackets @ Board Ends	
Stands max. 1.2m centres	Toe boards secured in place.	
No damage to equipment	Ladder/Staircase secured in place	
Bearing pins engaged	Ladder/Staircase set near mid span	
Front posts secure	Ladder set at 75° on bracket	
Double guardrail in place	Ext. Stand fixed guardrail	
HB Braces (1.8m and above)		
DATE	TIME	
INSPECTED BY (PRINT NAME)		
SIGNED		
REGULAR INSPECTIONS (BEFORE USE)		
DATE	TIME	INITIAL

SafeStand Ltd  
0208 795 3579





SafeStand® is a totally unique access system protected by multiple international patents and is ONLY available from SafeStand® Ltd

**SAFEStand®**  
  
**ACCESS SYSTEMS**

**Contact us for further details**

E: [office@safestand.co.uk](mailto:office@safestand.co.uk)

T: 0208 795 3579

SafeStand Ltd | LinkedIn

**SafeStand Limited**

Unit 6 Fourth Way, Wembley, Middlesex, HA9 0LH

**[www.safestand.co.uk](http://www.safestand.co.uk)**